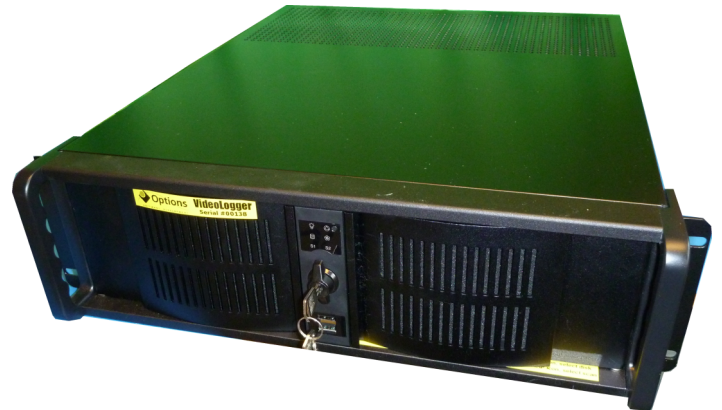
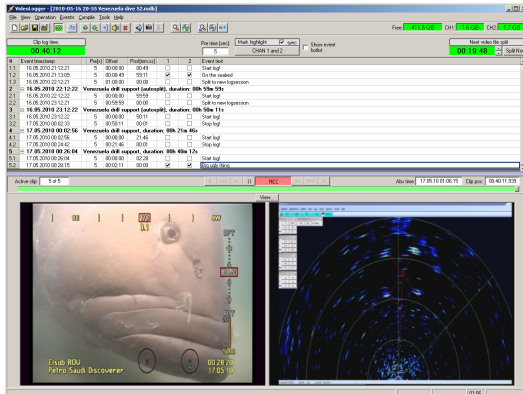


Integrated 1 to 3 channel video overlay and H.264 recording system



Features:

- 1 to 3 channel Video overlay, standard PAL or NTSC (HD 1080i available as option with external overlay boxes, one box required per channel, see VL2-HD datasheet)
- 1 to 3 channel Video logging PAL / NTSC / HD 1080i to H.264 format
- Serial ports and network for flexible decoding of data from ROV and survey
- Put dynamic data from survey/ROV anywhere on overlay. Also logo insertion
- Live realtime video output with overlay. (also preview on PC, but with ca 1sec compression delay)
- Stillpicture snapshot during recording and during playback.
- Realtime mirror logging to client disk or e.g. Network storage.
- Video event log linked directly to video pictures. Video events are typed in by operator, or easy point&click operation from predefined list.
- Easy retrieval of video clips by double-clicking on video events. Video playback will then start off exactly at the position where event was linked to the video.
- For PAL/NTSC: Easy production of DVD movies based on selection of events, and timespan for each event. (IMPORTANT NOTE: H.264 will need to be converted to MPEG2, this can be timeconsuming)
- Also function for Highlight-DVD based on start/stop flags set by operator during recording or playback. Burn highlight directly to DVD, or export the clips to a highlight archive project
- Video-DVD's will have DVD-menu with menu-text from related events recorded in VideoLogger.
- Removable harddrives for extended storage.

Input/outputs:



- 1 to 3 chan. of overlay with analog video in/out
- 1 to 3 channels of video input for H.264 video logging
- 1 to 3 channels of stereo audio input for sound linked to the video pictures.
- 4 serial ports and 1 Ethernet port for data-interfacing to survey/ROV/etc